

Newsletter

March 2022

EMPLOYEE APPRECIATION DAY

MARCH 4TH 2022

What better way to celebrate Employee Appreciation Day and to end a week then with Pizza and Drinks.

Drop into Subee Coffs Harbour or Newcastle between 1pm & 3pm on Friday the 4th of March for some Pizza and Drinks and to catch up with all the staff.

Please wear Employee ID.

Let us know if you're coming by the 2nd of March 2022 Via email –

Coffs Harbour – badams@subeenewlake.com.au

NewCastle- kbakewell@subeenewlake.com.au

We hope to see you there.



shutterstock.com · 1998714621

EMPLOYEES OF THE MONTH



Simon Trevanion

NewCastle

Our employee of the month is awarded to
Simon.

Simon always has a smile on his face, a
great attitude and willingness to learn.

Congratulations Simon!!! 



Marijke Johnsen

Coffs Harbour

Our employee of the month is award to
Marijke.

Marijke always has a bubbly & bright
nature about her, she is always willing to
cover shifts and help out where ever.

Congratulations Marijke!!! 

UPCOMING EVENTS

Coffs Harbour

THE COFFS COAST FOOD & WINE FESTIVAL COFFS

From Friday the 4th of March to Monday the 14th of March

A true foodie festival.

The Coffs Coast Food & Wine Festival will boast 10 days of decadence with Dining Experiences & Foodie Workshops hosted at the best restaurants in the region. The festival will highlight local ingredients and products at their finest. Each Dining Experience will be paired with art installations, live music and more.

For each ticket sold, 2 meals will be donated to someone in need through Oz Harvest.



JETTY THEATRE KIDS' OPEN DAY

Join us in all the fun as we invite kids and families to experience the wonderful world of theatre. Find out about what's coming up in 2022 in our kids' program, have a look around our beautiful venue and get excited for the jam-packed year of entertainment ahead.

This free event sees roving performers roaming the foyer with their playful tomfoolery and a chance for kids to enjoy face-painting and some light refreshments in a relaxed and playful 'kid's day out'.

We've managed to pack more kids shows into our program than ever before, so we look forward to seeing you at the theatre and sharing the joy and excitement of the arts.



Sunday 6th of March

From 10am to 12pm

337 Harbour Drive,

Coffs Harbour NSW 2450

TWILIGHT FOOD MARKET – COFFS HARBOUR

The twilight food market is open every Friday (weather permitting)

Starting at 4pm – 9pm

A family friendly food only market, diverse in multicultural cuisine and lots of choices for the kids, Dog friendly too. Bring a blanket or chair, bottle of wine or beer and kick back and enjoy the entertainment. Located in one of Coffs harbour's premier beach side locations, Park Beach Reserve, with crystal-clear water of Coffs creek on its doorstep.

Eat, Relax, Walk, Swim and Enjoy!

Surf Club Road, Ocean parade,
Coffs Harbour NSW 2450



UPCOMING EVENTS

Newcastle

THE 2022 GREATER BANK SHOW- NEWCASTLE

From Friday the 4th of March to Sunday the 6th of march

Over 100 high adrenaline, family and kid's amusements and games! 6 huge showbag operators featuring brand and in demand showbags. 3 days of continuous entertainment on stage and roving entertainment. Food, wine, lifestyle, and DIY activations in the Entertainment Centre on the grounds. Interactive industry, mining, and manufacturing exhibits in the Exhibition Hall. 3 days of Centre Ring entertainment featuring show jumping, campcraft, woodchop and all traditional components of an agricultural show.

Newcastle Motor show featuring vehicles and bikes of yesterday, today, and tomorrow.

Broadmeadow, NSW 2292



CRAFTALIVE NEWCASTLE

From Thursday the 10th of March to Sunday the 13th of March



Featuring both local and interstate craft experts, the show is packed full of the latest craft supplies, kits, and equipment.

CraftAlive is a hands-on event. A chance to learn from world-class specialists with interactive classes on Thursday, Friday, Saturday, and Sunday.

1 Churchill Cct, Hamilton South NSW 2303

Art & Dementia: Community Day & Group Visits

March 8th 10:30am – 12:00pm or 2:00pm – 3:00pm

Art & Dementia sessions are creative social visits to exhibitions, specifically designed for people living with dementia and their carers. Our friendly Facilitator uses works of art as a trigger for conversation and self-expression guiding people through artmaking activities in a social and supportive environment.

230 High Street, Maitland New South Wales 2320



NOTICES

The Ageing Mosaic – Supporting My Cultural Diversity

Currently 1 in 3 people receiving aged care services were born overseas. Older people from diverse backgrounds and life experiences should feel respected, supported, and treated with dignity that maintains their identity as an individual. By empowering older people from diverse life experiences, they can confidently have the information to optimise aged care services and supports to exercise choice and control.

For more information please visit – <https://opan.org.au/videos/the-ageing-mosaic-supporting-my-cultural-diversity>

The Aging Mosaic-Support for LGBTIQ people

Many older LGBTIQ+ people have lived through a time where identities were pathologized or criminalised. As a result, many LGBTIQ+ people have learned to conceal their sexual orientation, gender identity or intersex status in order to be safe, particularly when interacting with the health or social services sector. The fear and mistrust of these services in the past have led older LGBTIQ+ people to be reluctant to utilise mainstream services, including aged care.

For mor information please visit – <https://opan.org.au/videos/lgbtiq>

COVID – 19 Booster vaccination

Studies show that the immunity created by COVID – 19 vaccines begin to wane over time. A booster dose helps to strengthen your immune system and improve your long-term protections against serious illness from COVID-19 virus.

From 11 December 2021, ATAGI says the weight of evidence suggests that a booster vaccine increases antibody levels substantially and this will likely offer protection against both delta and the new omicron variant.



Refer a friend – Incentive Program

Subee is introducing “refer a friend” – incentive program

How it will work –

- 1 - Refer your friends to join Subee as an employee as a domestic support or qualified support worker.
- 2 - Once they commence employment and have maintained their position for 3 months you will be rewarded with a “refer your Friend” incentive of \$50 Voucher / Gift.
- 3 – When they successfully completed their 6-month probation you will be rewarded a further incentive of \$75 Voucher / Gift.
- 4 – At 12 months of continuous employment you will be rewarded a final incentive of \$100 Voucher / Gift.



Uniform Order

I will be doing a uniform order for both Coffs harbour and Newcastle at the start of next week, if you are after a new uniform, please let me know how many and what size you are after.

Scrubs are \$30 each and come in size XXS to 5XL,
Please let me know by the 4th of March 2022.

	CHEST	WAIST	HIP
XXS	74 - 79	56 - 61	74 - 79
XS	81 - 86	64 - 69	81 - 86
S	89 - 94	71 - 76	89 - 94
M	97 - 102	79 - 84	97 - 102
L	104 - 112	86 - 94	104 - 112
XL	114 - 122	97 - 104	114 - 122
2XL	124 - 132	107 - 114	124 - 132
3XL	135 - 142	117 - 124	135 - 142
4XL	145 - 152	127 - 135	145 - 152
5XL	155 - 163	137 - 145	155 - 163



New Staff Portal Login

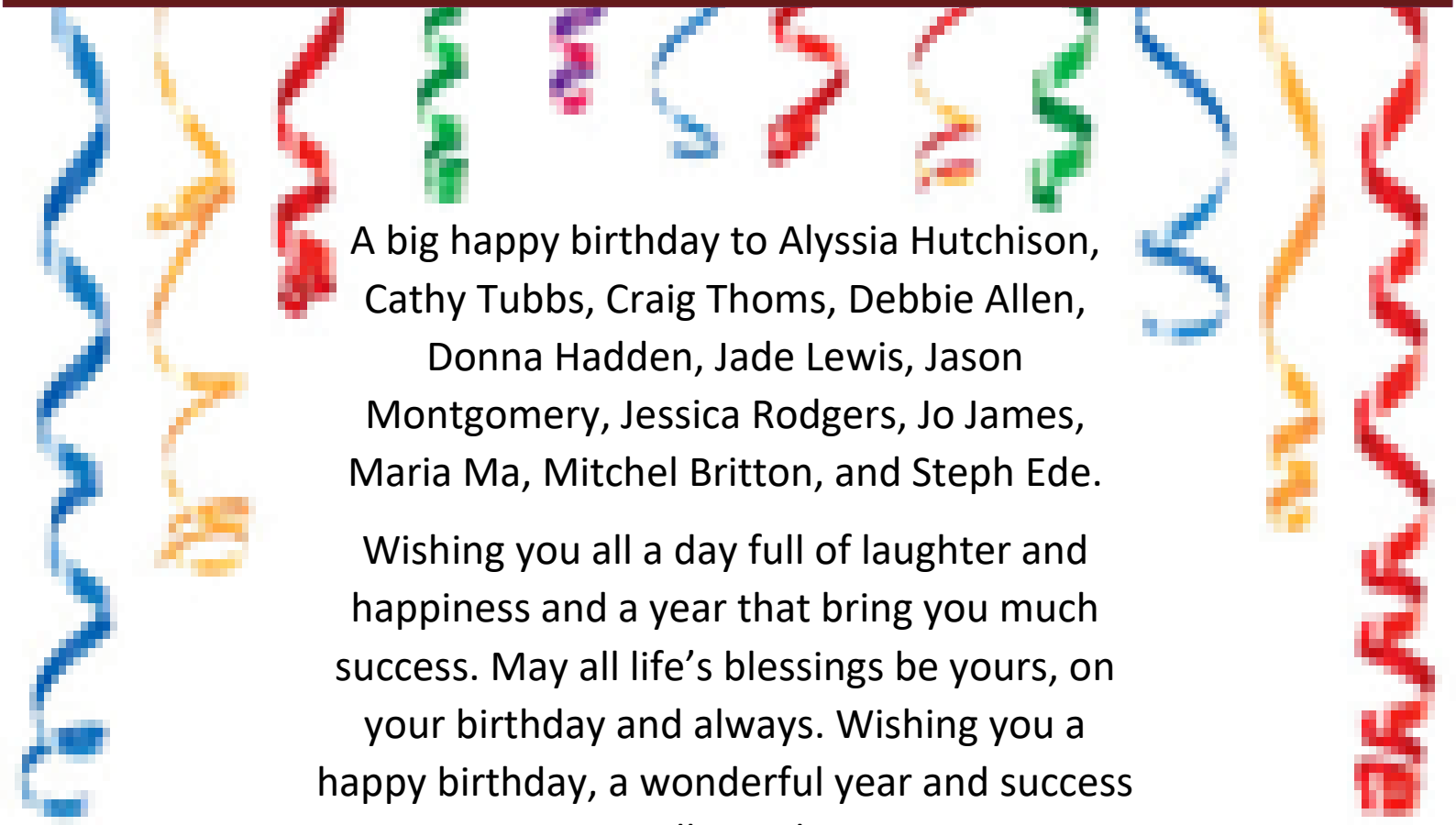
Username: Staff

Password: England

Trouble logging in.

Email HR@subeenewlake.com.au

BIRTHDAYS IN MARCH



A big happy birthday to Alyssia Hutchison, Cathy Tubbs, Craig Thoms, Debbie Allen, Donna Hadden, Jade Lewis, Jason Montgomery, Jessica Rodgers, Jo James, Maria Ma, Mitchel Britton, and Steph Ede.

Wishing you all a day full of laughter and happiness and a year that bring you much success. May all life's blessings be yours, on your birthday and always. Wishing you a happy birthday, a wonderful year and success in all you do.

INTRODUCING OUR NEW EMPLOYEES

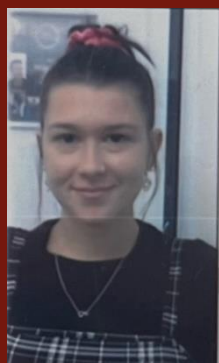
Allison Kedzlie

Allison is a cleaner in Coffs Harbour.
Allison has school cleaning experience and brings a bubbly vibe to the team.



Bree-Anna Adams

Bree is the new business support and is completing her Cert 4 in business administration at Subee Coffs Harbour.



Jill Smith

Jill is a support worker in Coffs Harbour.
Jill will be working with our age care clients.



Maria King

Maria is a support worker in Coffs Harbour
Maria comes to the team with enthusiasm and is working with many of our clients.



Mitchel Britton

Mitch is a support worker in Coffs Harbour.
Mitch comes with extensive experience in
the industry.



Reid Jaffer

Reid is a support worker in Coffs Harbour.
Reid is bringing to Subee his chef qualification
to assist clients in maintain their independence.



Samantha Menadue.

Sam is a support worker in Coffs Harbour.
Sam comes with a range of experience and is joining
the team in a range of our care service.

